

Kellogg's Better Days

DRIVING POSITIVE CHANGE FOR PEOPLE, COMMUNITIES AND THE PLANET

We're committed to creating [Better Days](#) for **3 BILLION PEOPLE** by the end of 2030. We'll do so by:

- Nourishing people with our foods.
- Helping to ensure all children are fed and fulfilled.
- Working with farmers to implement sustainable agriculture practices that support biodiversity.
- Protecting the earth's natural resources and committing to sustainable packaging.
- Ensuring we support diversity & inclusion across our company & throughout supply chain.

– Our Impact & Reach –

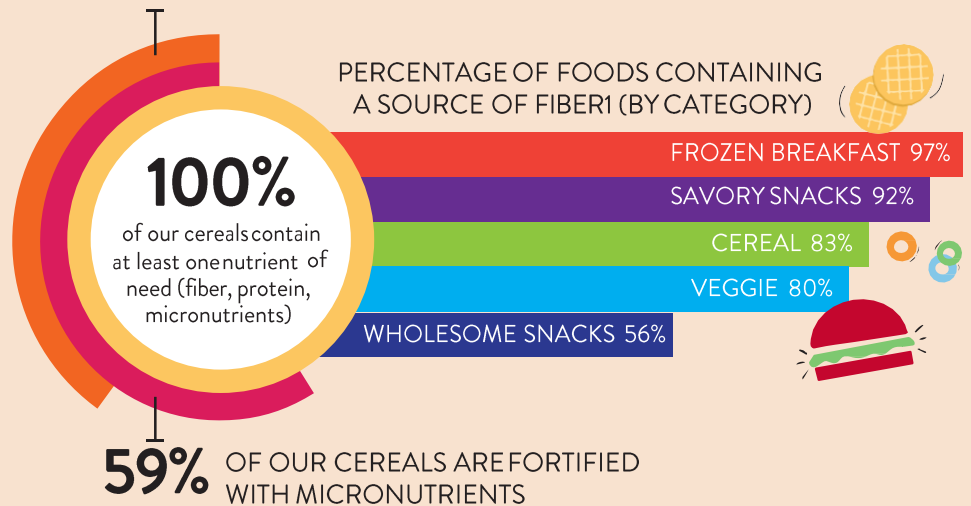
SINCE 2015, WE'VE CREATED **BETTER DAYS FOR NEARLY 600 MILLION PEOPLE** WORLDWIDE...

Nourishing with Our Foods

Nourished
PEOPLE BY PROVIDING
NUTRIENTS OF NEED,
INCLUDING VITAMINS:

A + D
FIBER + IRON

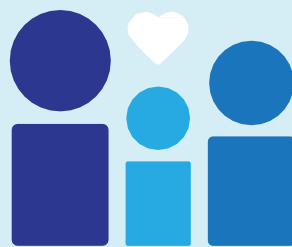
40% OF OUR CEREALS
CONTAIN VITAMIN D



Feeding People in Need



Donated
2.4 BILLION
SERVINGS
OF FOOD
TO PEOPLE
FACING HUNGER



Reached
3.2 MILLION
CHILDREN
THROUGH FEEDING
PROGRAMS



Nurturing Our Planet



Supported
MORE THAN 433,000
FARMERS & WORKERS
TO HELP BOOST YIELDS, SUPPORT
BIODIVERSITY & LIVELIHOODS

Reduced
GHG EMISSIONS
BY THE EQUIVALENT OF TAKING
NEARLY 2.5 BILLION
VEHICLE MILES OFF THE
ROAD.²



Achieved
76% RECYCLABILITY
of our packaging globally

Ensured **28%**
of electricity use in our
facilities comes from
**RENEWABLE
SOURCES**

Live Our Founder's Values



Contributed
90,000
VOLUNTEER
HOURS
TO CAUSES SUPPORTING
FOOD SECURITY



Supported
DIVERSITY & INCLUSION
WITH **42% FEMALE**
REPRESENTATION
IN MANAGEMENT
POSITIONS GLOBALLY³



More detail on our progress can be found online at <http://crreport.kelloggcompany.com/>

¹ Source of fiber is defined as at least 3g fibre per 100g, [Codex Alimentarius](#). Fiber nutrient content standards vary by country.
² EPA Equivalencies Calculator. Kellogg Company data from 2015–2019 <https://www.epa.gov/energy/greenhouse-gas-equivalencies-calculator>
³ Not part of our Kellogg's® Better Days 2030 commitments